

INDUSTRIAL R.O SYSTEM

Sarjan offers a range of Industrial RO plants from 500 lph to 10,000 lph.

Standard Features:

Powder coated steel frame

Multi-media filter

Carbon filter

Water softener

Thin film composite membranes Stainless steel RO vessels

High pressure pumps

PLC controls

Power On/Off switch

5 Microns pre-filter

Product water flow meter High pressure gauge

Inlet low pressure gauge Low pressure switch

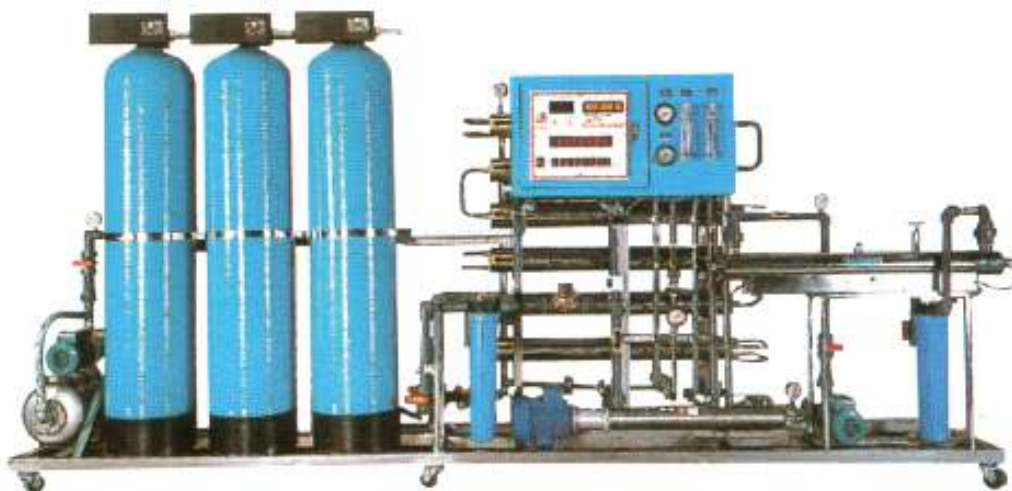
Heavy-duty PVC piping

Level control On/Off

Automatic flush

Vertical multistep centrifugal pump

Optional UV sterilizer and ozone



INDUSTRIAL R.O SYSTEM

Sarjan offers a range of Industrial RO plants from 500 lph to 10,000 lph.

Description:

This series is a complete multi-filtration water treatment system mounted on one skid. With systems ranging from 500 to 10000 GPD, manufactured by the highest quality components, all systems are designed to provide reliable and years of trouble-free service. (Note: UV sterilizers and Ozone can be added)

Operating Specifications:

- Feed water temperature : 85 ~F. maximum
- Feed water pressure : 35 psi minimum-85 psi maximum
- pH range : 4- 12
- Turbidity : must be removed
- Iron : maximum tolerance 0.5 ppm (Dissolved only)
- Hardness : over 10 gpg should be softened
- Hydrogen sulfide : must be removed
- Salt rejection : 98% nominal
- Electrical : 1 10V, 60HZ (50 HZ available on request)
220-440V, 60HZ (50 HZ available on request)
- Test conditions : operating pressure 200 psi
- Design temperature : 77 ~F. (25CC)
- Membranes : thin film composite

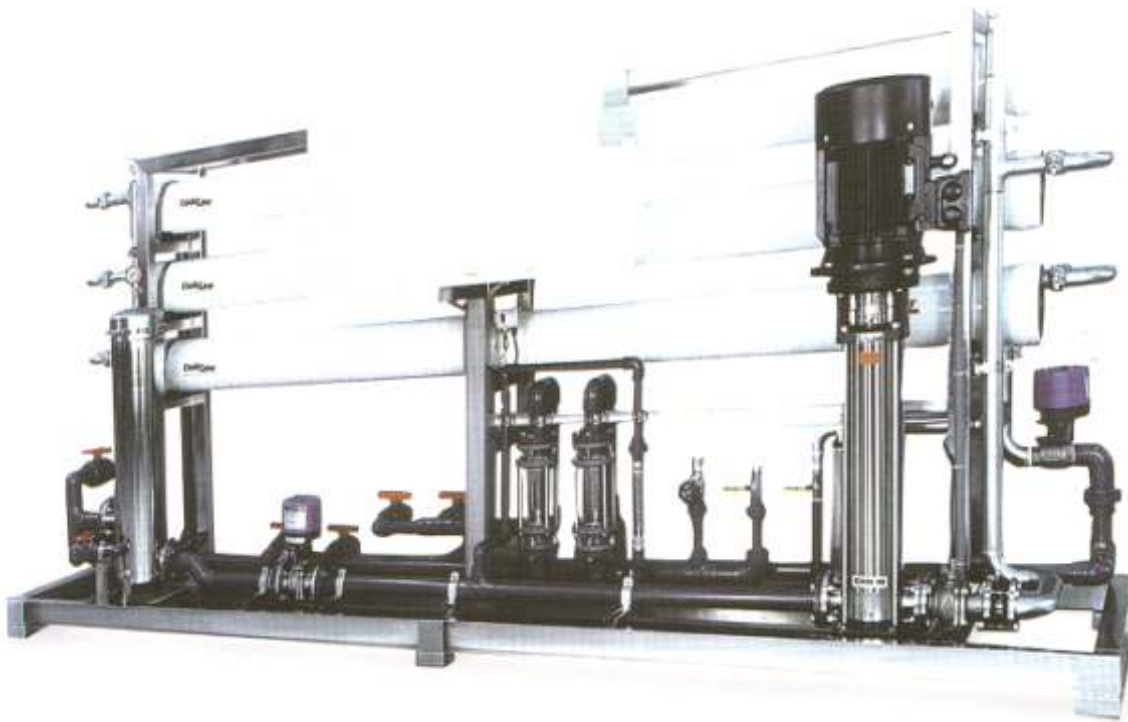
APPLICATIONS

The applications are limitless, like water stores, bottling plants, food processing, and many other commercial and industrial usage.

INDUSTRIAL R.O SYSTEM

Sarjan offers a range of Industrial RO plants from 500 lph to 10,000 lph.

Other models available



Note : Models specified are indicative only and would vary as per specifications/requirements of customers/water test report.